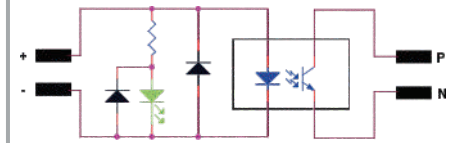
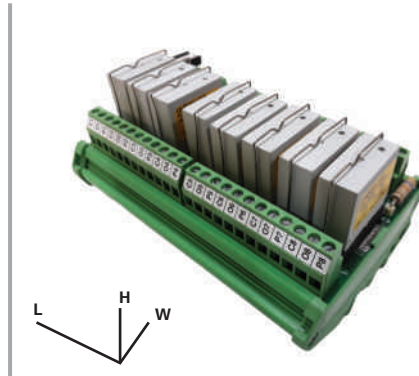


# Solid State Relay Modules

## DC Output Solid State Relay Modules

### Features:

- Fast traceability of signal status through Channel-wise LED indications.
- Plug In Type Relays.
- Interchangeable Looping at Input side using jumpers.
- Reduces Installation & commissioning time.
- Compact in design.
- Universal Rail mounting.



### Technical Data:

#### Input Data

Operating Voltage	4-32VDC
Rated Current (mA)	4-16mA
Input Status LED/Channel Protection	Green Back emf diode for high frequency (ON/OFF Switching)
Positive/Negative Looping	User Selectable using Jumpers

#### Output Data

Output Voltage	60V DC
Contact Configuration	Normally Open
Contact Current Rating	3Amp.
Turn On Time	2.5mSec.
Turn Off Time	40uSec.
Input to Output Isolation	2.5kV for 1 min.

#### Solid State Relay Data

SSR Make	UL or Equivalent
Contact Type	Normally Open
Input Voltage	4-32VDC
Input Current	4-16mA
Load Current	3Amp
Inbuilt Input LED indication	Green LED
Output	5-100VDC
ON state voltage Drop	≤ 0.3VDC

#### Relay Socket

Rated values	5A AC/ DC, 250V rms
Insulation resistance	1000MΩ at 500V DC
Standard conformity	EN 60947-5-1/ IEC 947-5-1
Ambient temperature	-45 to +120°C

#### Termination Data

Terminal Type	Screw Terminal
Nominal Current	24A
Cross-section	2.5mm <sup>2</sup>
Rated Voltage	250V
Rated surge Voltage	4KV
Solid/ Stranded [mm <sup>2</sup> / mm <sup>2</sup> ] AWG	0.2-4/ 0.2-2.5/ 24-12
Type of Insulation material	PA/ I
Tightening torque	0.6 Nm Max.

#### General Data

Ambient temperature	0°C to +60°C
Relative humidity	Max. 90% (Non-condensing)
PCB design	UL standard ANSI IPC 2221, 2222 & MIL 275B
Screw- Terminals	UL, CSA Standard & CE standard
Mounting	Din Rail Mountable

### Selection Matrix for Solid State Relay Module (Open collector output)

Channel Density		4		8		16	
Protection	Contact Fuse	-	✓	-	✓	-	✓
	Fuse, LED	-	✓	-	✓	-	✓
Normally Open Contact		✓	✓	✓	✓	✓	✓
Wetted Contact		-	-	-	-	-	-
Configuration	Source	✓	✓	✓	✓	✓	✓
	Sink	✓	✓	✓	✓	✓	✓
Current Consumption		105mA	105mA	205mA	205mA	405mA	405mA
Dimensions in mm(L X W)		74 x 90	87 x 126	134 x 90	132 x 126	269 x 90	262 x 126
Part No.		UL24D04-SSR-DC	UL24D04-OFI-SSR-DC	UL24D08-SSR-DC	UL24D08-OFI-SSR-DC	UL24D16-SSR-DC	UL24D16-OFI-SSR-DC
Ordering Code		086020100003	086020100002	086020200002	086020200004	086020300001	086020300002

### Application Industry

